

VAKUUM-GLASSAUGER P1-ALP

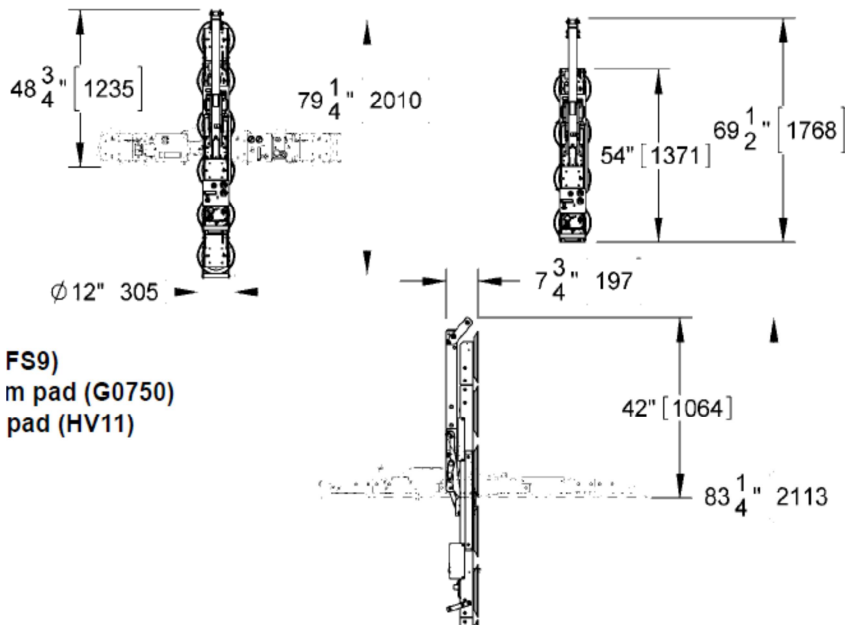
Eigengewicht: 57kg

Tragkraft 500kg bei 6 Saugtellern

optional 2 äußere Saugteller abnehmbar

dann Tragkraft 334kg bei 4 Saugtellern

- **zwei unabhängige Vakuumkreise**
nach EN 13155
- **manuelles Drehen um 180 °,**
mit Bolzen-Arretierung in 3 Positionen
- **manuelles Kippen um 90° aus der vertikalen Position**
in die horizontale Lage, automatisches Einrasten
in der vertikalen Stellung
- **netzunabhängige 12 V Akku-Stromversorgung**
- **optische und akustische Warneinrichtung**
- **Druckablass zum schnellen lösen**
- **zum Heben und Bewegen von Glas-**
Kunststoff- und Metallelementen,
sowie Stein-und Holzplatten
- **incl. Akku-Ladegerät**
- **incl. Transportkiste**



LOW-PROFILE MANUAL ROTATOR/TILTER 1100



MRTALPCH611LDC

With a dual vacuum system, 1100 lbs [500 kg] load capacity, removable pad frame extensions and a remarkably low profile, this Powr-Grip® rotator/tilter provides maximum versatility and ease of use in tight work locations.

Standard Pad Spread:

With 6 pads in use: 79-1/4" x 12" [2010 x 305 mm]

With 4 pads in use: 54" x 12" [1371 x 305 mm]

Number / Size of Pads: 6 / 11" [28 cm] dia. lipped

Maximum Load Capacity:

With 6 pads in use: 1100 lbs [500 kg]

With 4 pads in use: 736 lbs [334 kg]

(On smooth, nonporous surfaces. Please contact us for recommendations on other surfaces.)

Unit Weight: 125 lbs [57 kg]

Standard Operating Power: 12 volts DC, 10 amps

Load Movement:

Manual rotation, 180° edgewise,
with locking in 3 positions

Assisted manual tilt, 90° between upright and flat,
with automatic latching in upright position

Profile Thickness: 7-3/4" [197 mm] (does not include load)

Adjustable-position lift spool

Dual vacuum system

Low vacuum warning buzzer

Green lift light

On-board battery and charger

Battery energy gauge

Vacuum gauges

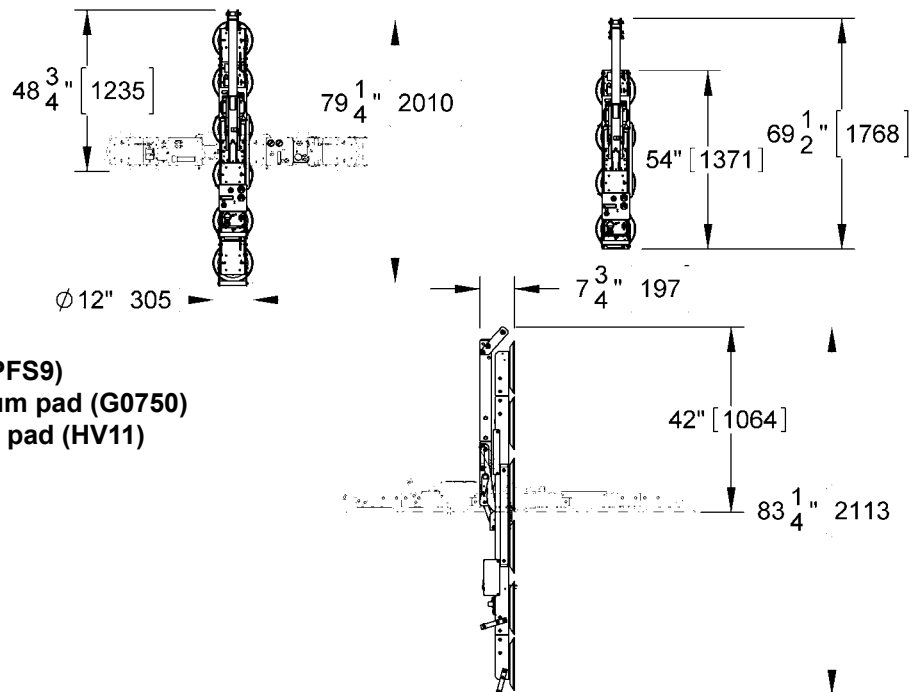
Vacuum line filters

Vacuum reserve tanks

Spring-mounted pads

Removable pad frame extensions

Blow-off for quick release



AVAILABLE OPTIONS:

Alternative vacuum pads:

9" [23 cm] diameter vacuum pad (VPFS9)

10" [25 cm] diameter concave vacuum pad (G0750)

10" [25 cm] diameter lipped vacuum pad (HV11)

(Specifications not as listed above.)

Please contact us for more information.)

Remote control system (EO8RC1)

DESIGN STANDARDS:

(See www.powrgrip.com for more information.)

ASME B30.20 - 2006

(BTH-1 Design Category "B", Service Class "0")

CE

Environmental conditions can affect product performance and longevity;
consult the product instructions on www.powrgrip.com or contact a Technical Sales Representative for more information.
Based on product information at time of publication.

WWW.POWRGRIP.COM

800.548.7341



908 West Main - P.O. Box 368
Laurel, Montana 59044 U.S.A.
406.628.8231 (phone) - 406.628.8354 (fax)



Wood's Powr-Grip products are sold
through authorized dealers.

Products are manufactured under an
ISO 9001 quality management system

Rev. 0.4 / 06-10 Spec. Sheet 8-9

